

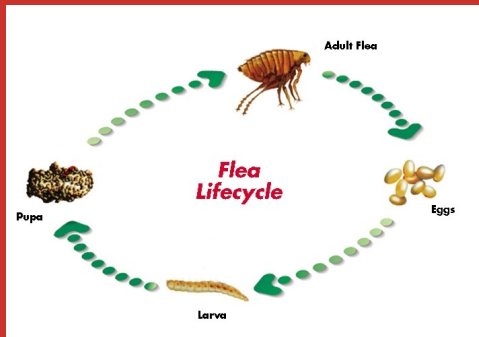
Flea Lifecycle

Eggs: Fleas lay eggs on the pet when the host is resting. The white eggs can fall off onto the ground, whether it is carpet or soil etc.

Larva: Small blind larvae will emerge from the eggs. These larvae move away from light, burrowing into carpet, cracks in floorboards or partly digested blood.

Pupa: After moulting three times the larva turns into pupa, which is sticky. It binds its surrounds to itself, becoming invisible. In summer, a flea may be ready to hatch from the pupa about 7-14 days after it is formed, however, they can remain dormant for up to 18 months.

Adult Flea: Nearby movement, and vibration, predominantly during warm, moist weather conditions, triggers the pupa to hatch into the flea. After feeding on the host, the engorged female flea is ready to mate and lay eggs about 24 hours after hatching. She is capable of laying up to 500 eggs (27 per day) over a lifetime which may span several weeks.



Source: FMC Australasia

FAQ

When will the treatment begin to work?

The treatment will show full effects after two weeks time. The products used in the treatment cannot penetrate the eggs. The egg has to hatch and the newly hatched flea must come into contact with a treated surface to die. Allowing two weeks gives the flea lifecycle full time to take affect.

Tip: Walk in the affected areas as much as possible as the nearby movement can help eggs hatch.

Are you able to be there at the time of treatment?

Unfortunately, no humans or pets are allowed on-site at the time of the treatment and for about 2-3 hours after (until the treatment has completely dried).

What happens if, after the two weeks, there is still evidence of a flea infestation?

Sandgate Pest Control offer a 3 month Free Service Period (warranty) on the inside only. So, if you are still having a problem after the recommended two weeks, call the office and we can come back and re-treat the problem areas (inside only).

BSA Lic No 108 7905

For more information contact Sandgate Pest Control

Phone 07 3269 6198 Fax 07 3269 6398

Email admin@sandgatepest.com.au

Post PO Box 2066, Brighton Eventide Q 4017

Website www.sandgatepest.com.au



FLEAS

SANDGATE PEST CONTROL



Ph: 3269 6198

www.sandgatepest.com.au

© Sandgate Pest Control - 2013

Treatment Information

Your Sandgate Pest Control Technician will treat all internal and external ground areas, including under sofa's and lounges (depending on the access available).

What you need to do:

Before treatment:

- Vacuum or mop all floors.
- Remove toys, clothes etc. from the floor.
- Cover the fish tank and turn off the filter prior to treatment, as some insecticides will affect fish.
- Remove pets from the area to be treated – return them only after the treatment has dried.
- Mow all grass areas.
- Treat the pets – advice may be sought from your Veterinarian.

After treatment:

Do not vacuum or mop for at least seven days after treatment. This allows the eggs to hatch and make contact with the treatment.

Remember the treatment takes time!

Be patient. **Even though everything has been done correctly, you will still see newly hatched fleas, usually for several weeks.**

Do not leave flea infested areas undisturbed – movement hatches fleas.

What to expect after treatment:

Fleas will be seen when an area is newly disturbed – such as when people get up in the morning or go outside. When the treatment is working, fleas will hatch, contact the treated surface (carpet, soil – treated by Sandgate Pest Control, or pet – treated with on-animal product) and die within a few hours.

Sandgate Pest Control Technician spraying inside for fleas.



Sandgate Pest Control Technician spraying outside for fleas.

Did you know?

You should leave your pet in the flea infested areas (once the chemical from the treatment has dried).

Why?

Because it will attract the fleas. If the pet is removed from the infested area, fleas will continue to hatch for about six weeks just from normal human activity. Re-treat your pet regularly according to the label of the on-animal flea product.

Helpful Hints

Treat your pets as soon as you can. You will get better results if all flea treatments – environmental and on-animal – are done around the same time.

DO NOT AVOID flea infested areas after the treatment – you will reduce the effectiveness of the treatment – especially remember the spare room, shed or places where the pet likes to rest.

If you remove the pet, flea problems may appear to be worse – because you will become the only potential host.

It is best to treat before the numbers build up. There is no need to go through the discomfort of flea bites.

Entering vacant houses will stimulate any fleas waiting to hatch. This is especially a problem with vacant rental and holiday houses.

A good stomp around your property will encourage hatching and cause the fleas to come in contact with the chemical and die.

If you are going on holidays, have a friend stomp through the house/yard several times while you are away, especially on the day of your return – the fleas will hatch and die on the treated surfaces before you return. (You will owe your friend big time).