

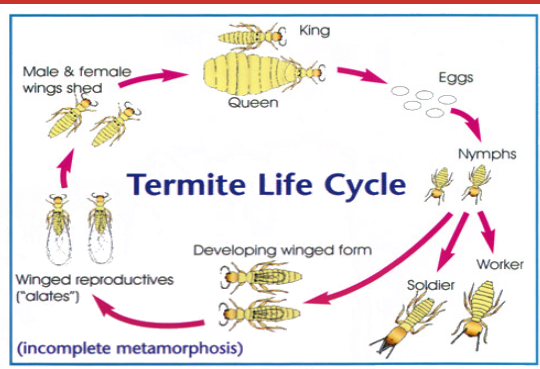
## Termite Life Cycle

**Alates:** Large numbers of winged male and female termites are released from the colony on warm nights a few times a year. While you may see hundreds of these flying around, only a small number survive the flight. These then drop their wings, find a mate, and if they can find a suitable location they will start a new colony.

**Queen:** The queen lays up to 100 eggs a day.

**Nursery:** Eggs and nymphs in the nursery develop into the type of termite required for the development and survival of the colony.

**Soldiers and Workers:** These termites are blind and carry out all work for the colony. The heads of the soldiers are armoured to allow them to defend the colony.



Source: FMC Australasia

## FAQ

### My neighbour has termites, will I get them?

Not necessarily, but termites forage for food long distances from their nest so it is quite common for neighbouring properties to find termite damage.

### How can termites enter my home?

They can enter through a variety of ways, however, the most common entry points are: 1) Through any timber in contact with the ground and your house. 2) Through weep holes. 3) Through cracks in a slab or through slab joints.

### What is the best way to protect my home?

**Step One:** Install a chemical barrier to the full perimeter of the home.

**Step Two:** Continue with annual termite inspections (this allows your technician to monitor your home and also continues your warranty).

### Can I use mulch in my gardens?

Damp conditions under mulch creates an ideal habitat for termites. If you must use mulch it is recommended that garden beds are kept far away from the house. Using Cypress mulch does not mean you won't get termites.

BSA Lic No 108 7905

For more information contact Sandgate Pest Control

Phone 07 3269 6198 Fax 07 3269 6398

Email [admin@sandgatepest.com.au](mailto:admin@sandgatepest.com.au)

Post PO Box 2066, Brighton Eventide Q 4017

Website [www.sandgatepest.com.au](http://www.sandgatepest.com.au)



# SUBTERRANEAN TERMITES

**SANDGATE PEST CONTROL**



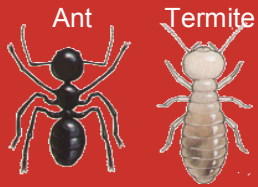
Ph: 3269 6198

[www.sandgatepest.com.au](http://www.sandgatepest.com.au)

© Sandgate Pest Control - 2013

Subterranean termites cause destruction and damage throughout thousands of homes every year.

Often incorrectly referred to as white ants, termites are actually completely different to ants.



Note the sandy white colour of a termite

**MYTH: If you have black ants, you don't have termites.**

Whilst they are enemies, seeing Black Ants does not mean you don't have termites. They can co-exist within a home.

### DID YOU KNOW?

Subterranean termites get their name because they travel underground through soil.

*Subterranean means underground.*

A termite barrier treats all of the soil surrounding your home. This way termites cannot get inside without travelling through treated soil.

A soldier termite



## I FOUND TERMITES!!!



### Do not spray them.

Spraying them yourself will only kill what is there - it won't treat the colony (which our treatment will).



### Call Sandgate Pest Control.

We will send out a technician who will look at the area, quote for a treatment, and explain their treatment recommendations.



### Book an inspection & eradication.

An inspection allows us to examine all areas of your home and identify all active (live) termites. Based on their findings a technician can then treat and eradicate the live termites.



### Book a termite barrier.

Installing a termite barrier is the final step in protecting your home. Providing long lasting termite protection, a barrier comes with a 5 - 10 year warranty (conditions apply - see your quote).



**MYTH: My house is new, I won't get termites.**

It is a requirement that all new homes have termite protection installed. However, due to a number of factors, termite protection can sometimes fail. Annual inspections will identify these factors and also continue your BSA warranty.

## Termite Control

A termite chemical barrier, along with regular timber pest inspections, is the most effective way of protecting your home from termite attack. However, implementing a few steps can help ensure your home is as safe as possible.



Termites are attracted to wood. So remove all loose timber, old tree stumps, untreated landscaping timbers, sleepers and logs.



Where possible, use treated timber for all situations where timber is in close contact with the ground (e.g. fences).



Termites are greatly attracted to areas of high moisture so ensure all downpipes, hot water and air-conditioning overflows are connected to a drain. Fix all leaking taps, showers and hoses.



Termites prefer humid conditions so ensure the subfloor is well ventilated and has proper drainage.



Ensure all timber posts and timber battens are a minimum of 75mm above the ground. This provides a physical barrier, whereby regular inspections will reveal termite workings on the stirrup.



Check all ant capping, making sure none is defective. Proper ant capping provides a physical barrier.